



PAIR-UPS™

When?

© 2005 LinguSystems, Inc.
AG

PAIR-UPS™

When?

© 2005 LinguSystems, Inc.
AG

PAIR-UPS™

When?

© 2005 LinguSystems, Inc.
AG

PAIR-UPS™

When?

© 2005 LinguSystems, Inc.
AG

PAIR-UPS™

When?

© 2005 LinguSystems, Inc.
AG

PAIR-UPS™

When?

© 2005 LinguSystems, Inc.
AG

PAIR-UPS™

When?

© 2005 LinguSystems, Inc.
AG

PAIR-UPS™

When?

© 2005 LinguSystems, Inc.
AG

PAIR-UPS™

When?

© 2005 LinguSystems, Inc.
AG



PAIR-UPS™

When?



LinguSystems, Inc.
3100 4th Avenue
East Moline, IL 61244

1-800-PRO IDEA
1-800-776-4332
www.linguisticsystems.com

© 2005
N46-3

14-05-987654321

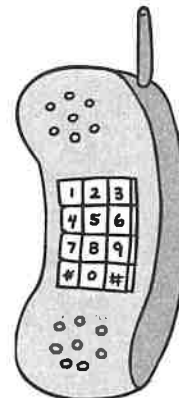
When

This deck of *Pair-Ups: When?* targets asking and answering *when* questions. There are 26 pairs of *when* cards. Each pair consists of a *when* question card and a matching answer card, such as *When does a bear hibernate?* (*In the winter*).

At first, present up to six pairs of *when* question and answer cards at a time and make sure your students can label them and match them appropriately. As your students identify correct matches, model the *when* questions on the cards. Then use the cards to play games requiring matching pairs of cards, such as Go Fish and Memory.

Use your own judgment about the complexity of the responses to require from your students, depending on their expressive language skills.

1



When do you answer a phone?

2



When it rings

3



When do you blow out the candles on a birthday cake?

4



After people sing "Happy Birthday to You"

5



When does a woman become a mother?

6



When she has a baby

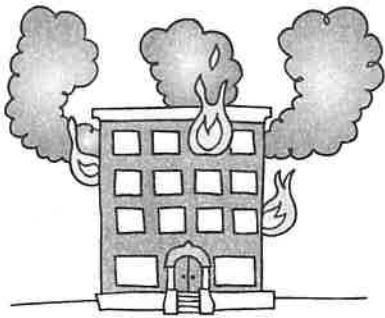
7



When do you dial 911?

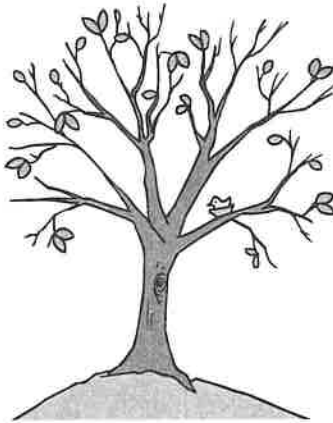


8



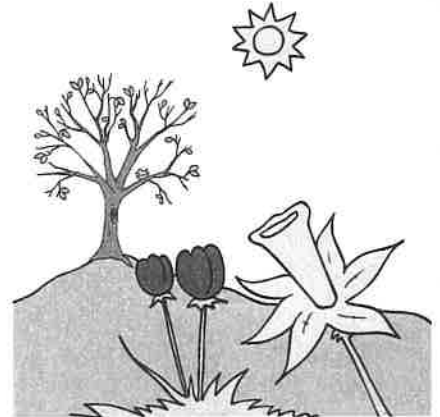
In an emergency

9



When do many trees
grow new leaves?

10



In the spring

11



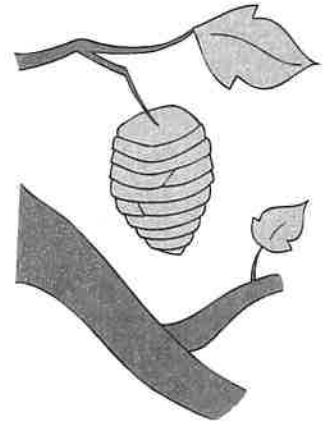
When do you send Valentines?

12



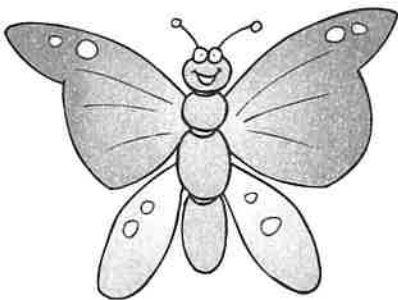
On Valentine's Day

13



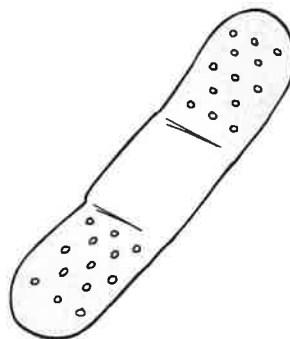
When does a caterpillar
spin a cocoon?

14



Before it becomes a butterfly

15



When do you need a bandage?

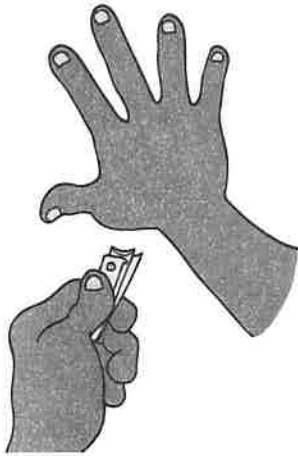
16



When you have a cut



17



When do you clip your fingernails?

18



When they are too long

19



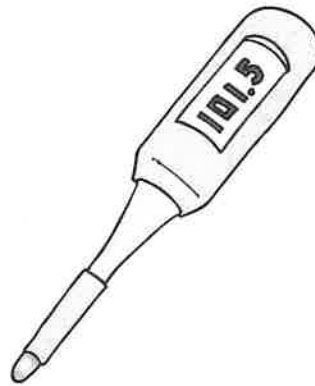
When do you wear a raincoat?

20



When it's raining

21



When do you have a fever?

22



When you are sick

23



When do you use a napkin?

24



When you eat something

25



When do you wear sunglasses?

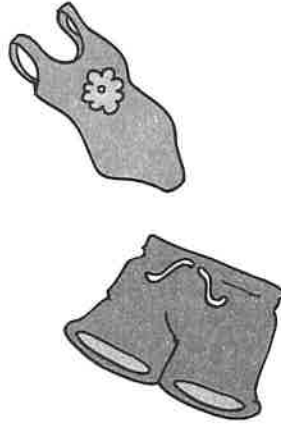


26



When you are
in bright light outdoors

27



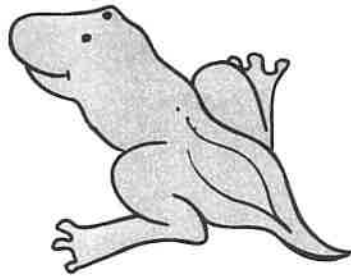
When do you wear a swimsuit?

28



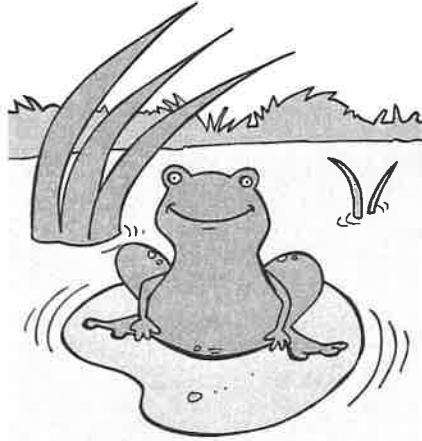
When you go swimming

29



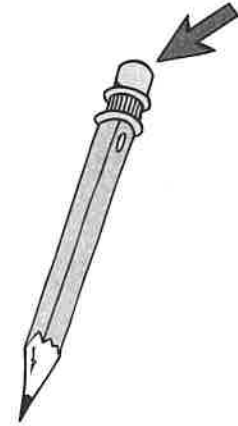
When does a tadpole
lose its tail?

30



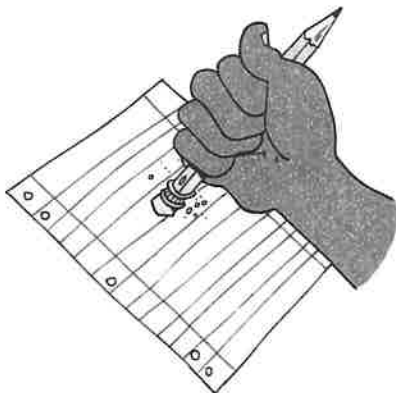
When it becomes a frog

31



When do you use the eraser
on a pencil?

32



When you wrote a mistake
in pencil

33



When do you raise
your hand in class?

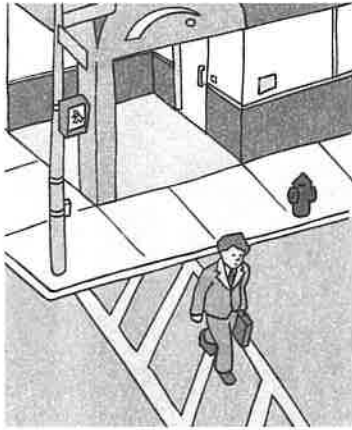
34



When you want to say
something or you need help

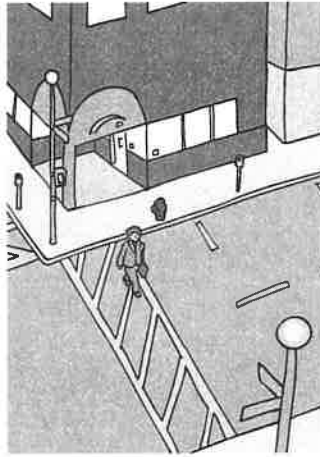


35



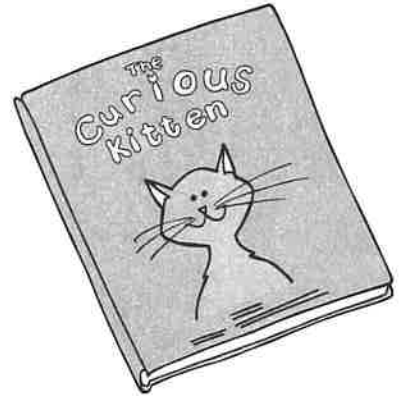
When can you cross a street safely?

36



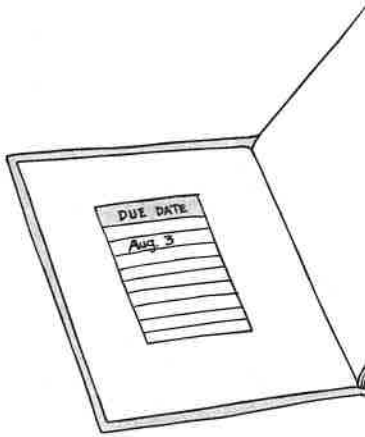
When there is no traffic coming

37



When do you return a library book?

38



On or before the due date

39



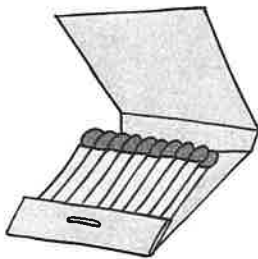
When do you pay for groceries in a grocery store?

40



After you load your food into a cart

41



When do you play with matches?

42



Never

43



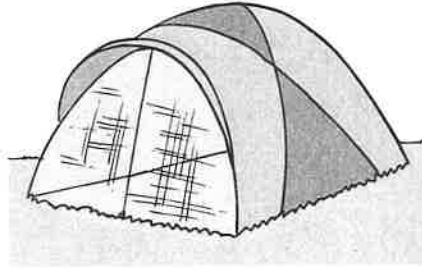
When does a bear hibernate?

44



In the winter

45



When do people sleep in a tent?

46



When they go camping overnight

47



When do you say, "You're welcome"?

48



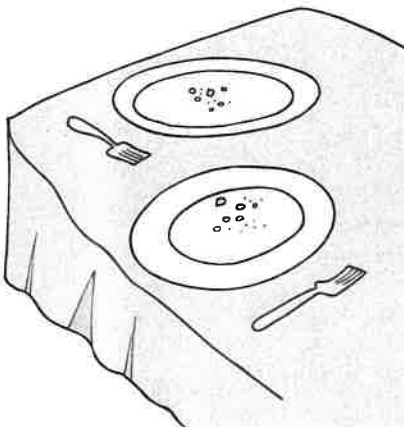
When someone says, "Thank you."

49



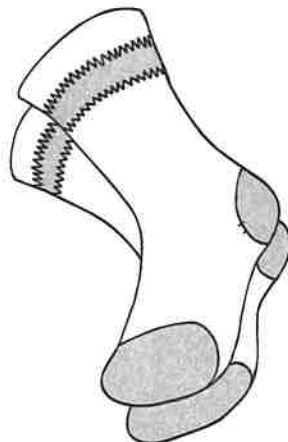
When should you eat dessert?

50



After you eat your meal

51



When do you put your socks on?

52



Before you put your shoes on